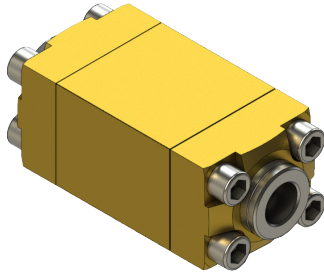


## HPG 12 FI

## Filter



- ♦ Medium : inert gases / rare gases / O<sub>2</sub> / CO<sub>2</sub> / air, other media on request
- ♦ Filter cartridge exchangeable
- ♦ Suitable for high-pressure oxygen service
- ♦ Approval : CTE 600 bar test

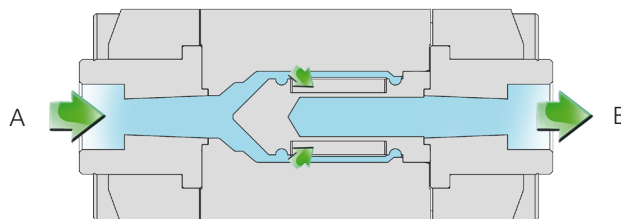
As market leader for high-pressure valves and systems for the gas filling industry we developed the new valve series HPG for 450 bar filling technology. These valves are designed for a service pressure of 600 bar. The filter HPG 12 FI has a filter cartridge through which the medium flows. The filter cartridge ensures that potential contaminations in the medium are filtered out. The material of the filter is hardly inflammable which guarantees the operational safety of your filling system in the long run.

## Technical data

♦ Pressure range	PN 600
♦ Standard connections	SW 1/2"
♦ Nominal diameter	DN 12
♦ Media temperature	from -20 °C to +65 °C
♦ Ambient temperature	from -20 °C to +60 °C
♦ Flow direction	A → B
♦ Options with filter cartridge	15 µm                      63 µm (standard; other filter sizes on request)
♦ Kv-value	--- m <sup>3</sup> /h                      --- m <sup>3</sup> /h
♦ Weight	4,5 kg (including connection adapter)

Version April 2016

## Function

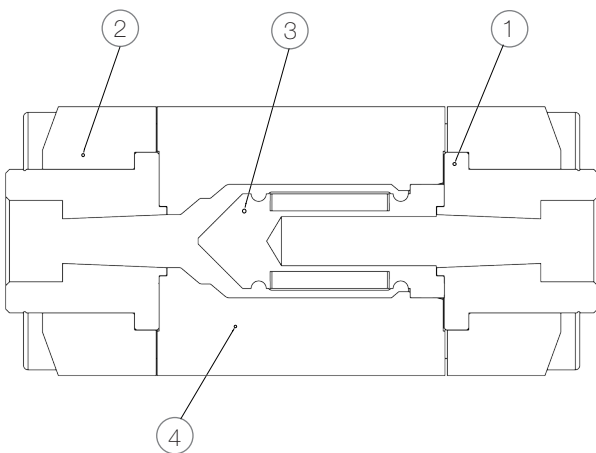


 Medium : gas     Flow direction

## Options with the filter

- ◆ Connections
  - Threaded female socket (stainless steel) : G 3/8
  - Weld-on end (stainless steel, Monel) : socket welding SW 1/2", 14mm
- ◆ Filter
  - Nickel 15µm, Nickel 63µm, (standard), Monel 63µm, Monel 100µm
- ◆ Further filter sizes can be inserted afterwards
- ◆ Assembly in compact manifolds (possibility to join up to 7 valves on 1 module)

## Material specification



Position	Description	Material
1	Connection piece	Monel, stainless steel, brass
2	Union nut	Brass
3	Filter cartridge	Monel/nickel
4	Filter housing	Brass

## Dimensions

