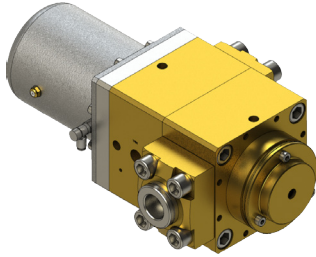


HPG 12 NC / NO

2/2 way valve (pneumatically operated)



- ♦ Medium : inert gases / rare gases / O₂ / CO₂ / air, other media on request
- ♦ Function NC (normally closed) or NO (normally open)
- ♦ This valve is pressure-balanced and suitable for high-pressure oxygen service
- ♦ Approval : CTE 600 bar test
- ♦ Connections for pressure indicator available

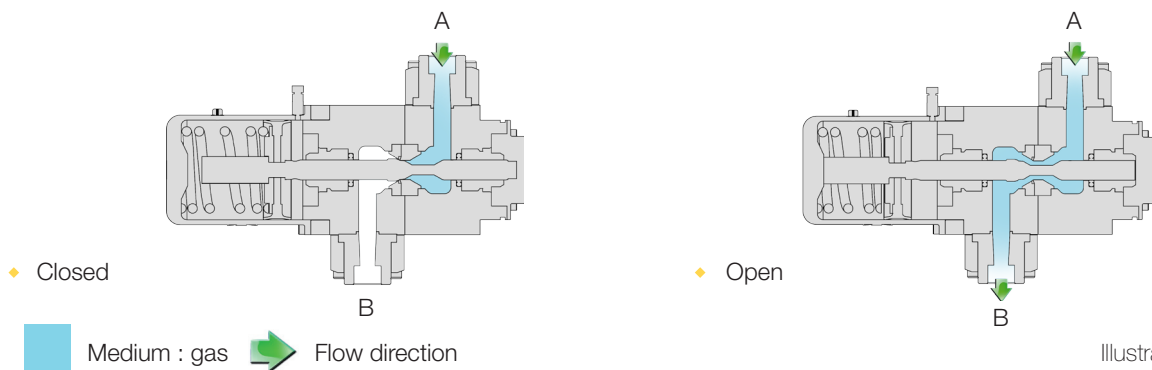
As market leader for high-pressure valves and systems for the gas filling industry we developed the new valve series HPG for 450 bar filling technology. These valves are designed for a service pressure of 600 bar. The valves type HPG 12 NC (normally closed) and HPG 12 NO (normally open) are 2/2 way valves, which are pneumatically operated. By the use of pilot media, the valves open and close against the spring load (depending on the type of valve).

Technical data

Version April 2016

♦ Pressure range	PN 600
♦ Standard connections	SW 1/2"
♦ Nominal diameter	DN 12
♦ Actuation	3/2 way pilot valve
♦ Pilot pressure	7 bar
♦ Pilot connections	4 mm
♦ Media temperature	from - 20 °C bis + 65 °C
♦ Ambient temperature	from - 20 °C bis + 60 °C
♦ Leak rate	10 ⁻⁶ mbar l/s
♦ Actuation time / opening	Type NC 600 - 9000 ms (adjustable with nozzle) / type NO 2700 ms
♦ Actuation time / closing	Type NC 600 ms / type NO 400 - 4000 ms (adjustable with nozzle)
♦ Flow direction	A → B B → A
♦ Kv-value	4,5 m ³ /h 4,3 m ³ /h
♦ Weight	16,5 kg (including connection adapter)

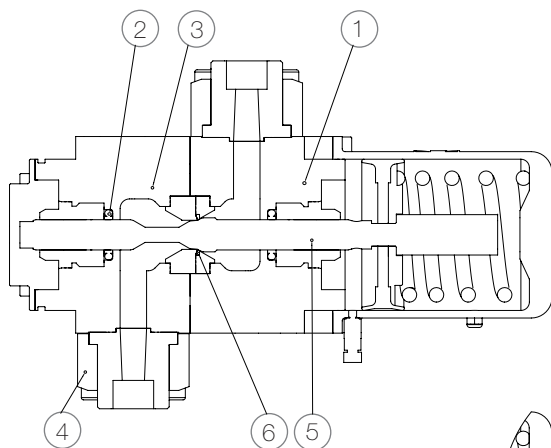
Function



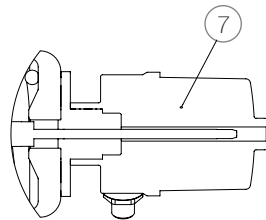
Options with this valve type

- ◆ Connections
 - Threaded female socket (stainless steel) : G 3/8
 - Weld-on end (stainless steel, Monel) : socket welding SW 1/2", 14mm
- ◆ Different types of limit switches available
- ◆ Assembly in compact manifolds (possibility to join up to 7 valves on 1 module)
- ◆ Sensor ports for pressure registration / measuring NPT 1/4
- ◆ Other options on request

Material specification



Position	Description	Material
1	Upper valve body	Brass
2	Spindle seal	Turcon®
3	Lower valve body	Brass
4	Connection piece	Monel, stainless steel
5	Valve spindle	Monel
6	Valve seat	Tecasint
7	Position feedback	PPS



Detailed Illustration with stroke measuring system

Dimensions

Illustration NC

