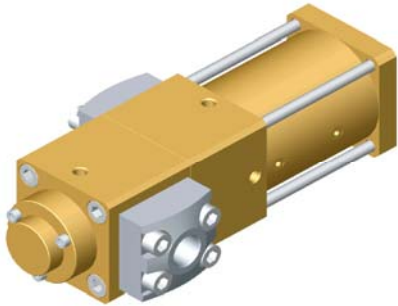


MPG 12 NC / MPG 12 NO



- ▶ 2/2 way valve
 - ▶ function
 - ▶ design
 - ▶ main materials
 - ▶ seat material
 - ▶ media
 - ▶ approval
 - ▶ suitable for high pressure oxygen service
- externally controlled
 NC or NO
 pressure balanced
 brass and monel
 PEEK
 inert gases / rare gases /
 CO / O₂ / CO₂ / air
 other media on request
 BAM

technical data

- ▶ pressure range 0 - 420 bar
- ▶ connections BSP 1/4", BSP 1/2", NPT 1/4", NPT 1/2", SW 1/2", SW 3/4"
- ▶ nominal diameter DN 12
- ▶ actuation with 3/2 pilot valve
- ▶ actuating pressure 7 bar
- ▶ actuator connections 4 mm
- ▶ media temperature from - 40° C to + 80° C
- ▶ ambient temperature from - 40° C to + 60° C
- ▶ vacuum leak rate 10⁻⁶ mbar x l x s⁻¹
- ▶ actuation time / opening type NC 620 - 24000 ms (adjustable with nozzle) / type NO 550 ms
- ▶ actuation time / closing type NC 550 ms / type NO 620 - 24000 ms (adjustable with nozzle)
- ▶ flow direction A > B B > A
- ▶ Kv-value 4,81 m³/ h 4,64 m³/ h

- ▶ length 276 mm
- ▶ width 79 mm
- ▶ weight 10,8 kg (incl. connection flanges)

alternative valve types of this series

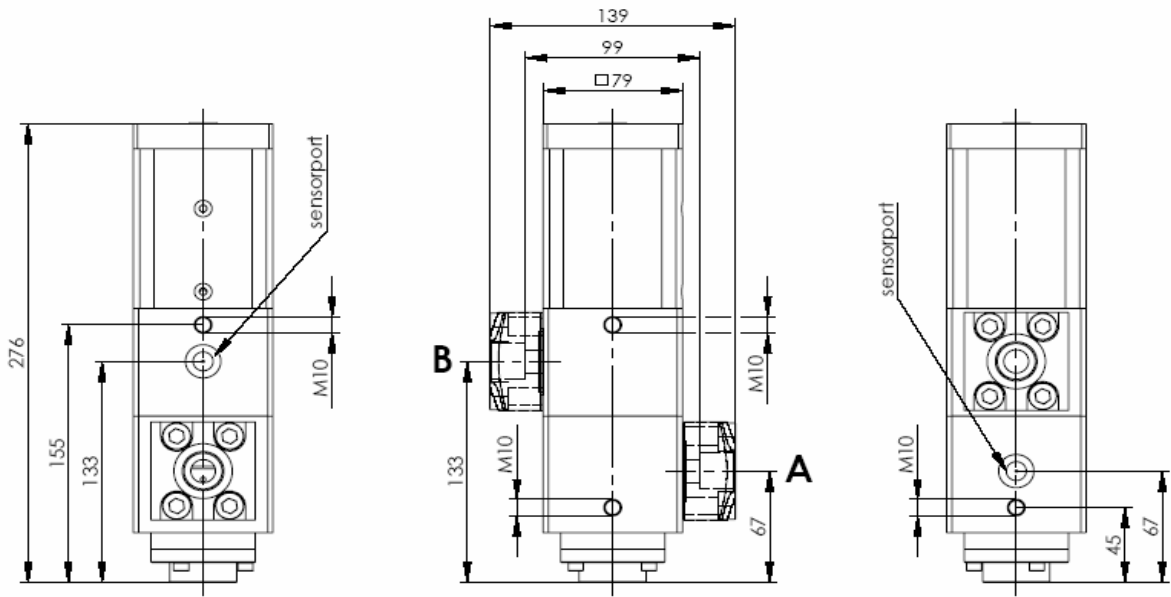
- ▶ manually operated version
- ▶ manual + pneumatic version
 (i. e. in pneumatic version with manual override)
- ▶ proportional version
- ▶ manual + pneumatic proportional version
 (i. e. pneumatic prop. version with manual override)

options with these valve types

- ▶ connections made to specification
- ▶ pressure measuring ports
- ▶ limit switches Reed / 24 V-DC
- ▶ assembly in compact manifolds
 (possibility to join up to 8 valves on 1 module)
- ▶ configuration in stainless steel instead of monel
- ▶ other options on request

technical drawings

MPG 12 NC



MPG 12 NO

