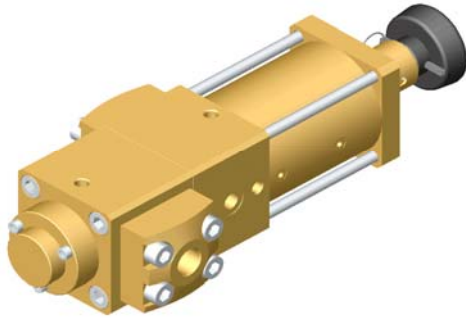


## MPG 12 NC-HD / MPG 12 NO-HD



- ▶ 2/2 way valve
  - ▶ function
  - ▶ design
  - ▶ main materials
  - ▶ seat material
  - ▶ media
  - ▶ approval
  - ▶ suitable for high pressure oxygen service
- externally controlled with manual override  
 NC-HD or NO-HD  
 pressure balanced  
 brass and monel  
 PEEK  
 inert gases / rare gases / CO / O<sub>2</sub> / CO<sub>2</sub> / air  
 other media on request  
 BAM

### technical data

- ▶ pressure range 0 - 420 bar
- ▶ connections BSP 1/4", BSP 1/2", NPT 1/4", NPT 1/2", SW 1/2", SW 3/4"
- ▶ nominal diameter DN 12
- ▶ actuation with 3/2 pilot valve
- ▶ actuating pressure 7 bar
- ▶ actuator connections 4 mm
- ▶ media temperature from - 40° C to + 80° C
- ▶ ambient temperature from - 40° C to + 60° C
- ▶ vacuum leak rate 10<sup>-6</sup> mbar x l x s<sup>-1</sup>
- ▶ actuation time / opening type NC 620 - 24000 ms (adjustable with nozzle) / type NO 550 ms
- ▶ actuation time / closing type NC 550 ms / type NO 620 - 24000 ms (adjustable with nozzle)
- ▶ flow direction A > B                      B > A
- ▶ Kv-value 4,81 m<sup>3</sup>/h                      4,64 m<sup>3</sup>/h
  
- ▶ length type NC 346 mm / type NO 364 mm
- ▶ width 79 mm
- ▶ weight 11,1 kg (incl. connection flanges)

### alternative valve types of this series

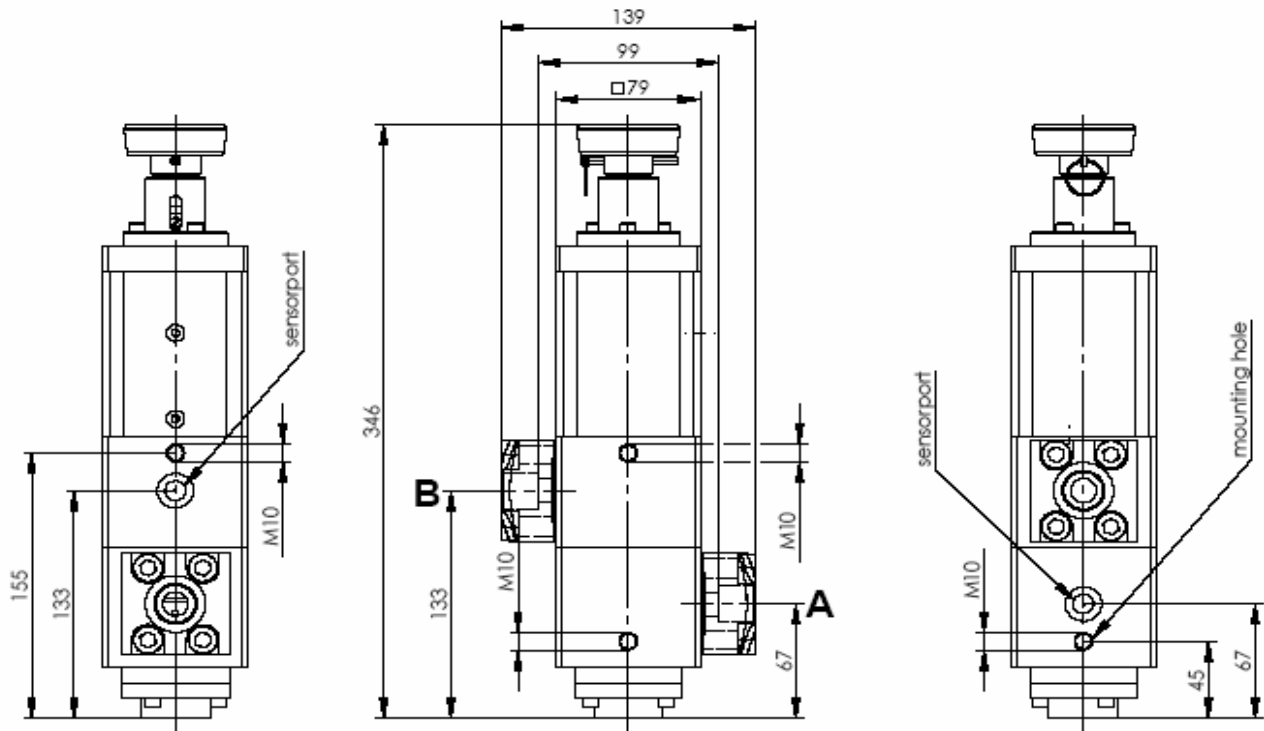
- ▶ manually operated version
- ▶ pneumatic version
- ▶ proportional version
- ▶ manual + pneumatic proportional version  
 (i. e. pneumatic prop. version with manual override)

### options with these valve types

- ▶ connections made to specification
- ▶ pressure measuring ports
- ▶ limit switches Reed / 24 V-DC
- ▶ assembly in compact manifolds  
 (possibility to join up to 8 valves on 1 module)
- ▶ configuration in stainless steel instead of monel
- ▶ other options on request

technical drawings

MPG 12 NC-HD



MPG 12 NO-HD

