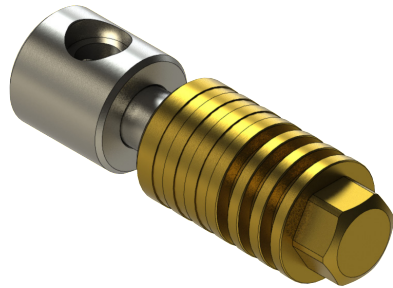


Pipework elements



Particle traps

- ♦ Simple but effective protection of valves and system components against particles/particle impacts and resulting damage
- ♦ Protection against rough contaminations before they enter the filling system
- ♦ Different materials and connection sizes available
- ♦ Pressure range 420bar available

Particle traps from m-tech offer simple but effective protection of valves and high-quality system components in a filling system that could be damaged by particle impacts. This compact unit can be installed anywhere in the pipework and catches rough contaminations before they enter the filling system. Particle traps are particularly installed at the gas inlet lines and ramp outlets. By regularly emptying the traps you can measure the degree of contamination. They are available in Monel or stainless steel and different connection sizes.

Technical data

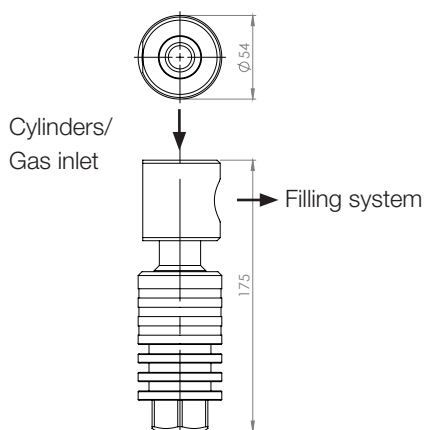
- | | |
|------------------------|-----------------------|
| ♦ Materials | Monel, Stainless |
| ♦ Standard connections | SW 1/2", SW 3/4" |
| ♦ Media temperature | from -40 °C to +80 °C |
| ♦ Ambient temperature | from -40 °C to +60 °C |
| ♦ Weight | 1,5 kg |
| ♦ Mounting position | Always standing |

Version May 2016

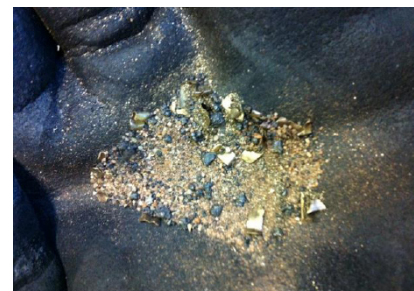
Version

- ♦ For oxygen service (m-tech standard) assembled free of oil and grease

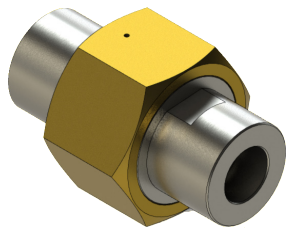
Dimensions



- ♦ Particulate traps can prevent penetration of particles into the filling system



Pipework elements



Breakable couplings

- ♦ Simple and fast connection of single pipes
- ♦ Available in different materials (Monel, stainless steel, brass)
- ♦ Different connections available, also special connections can be realized
- ♦ Pressure range 420bar and 600bar available

Breakable couplings from m-tech serve as connection units between single pipes. Connections are variable and available in Monel, stainless steel and brass which enables to meet the different safety requirements of our customers. Also special connections can be realized.

Technical data

Series	MPG	HPG
♦ Pressure range	420bar	600bar
♦ Materials	Monel, stainless steel, Brass	Monel, stainless steel, Brass
♦ Standard Connections	SW 1/2", SW 3/4"	SW 1/2"
♦ Media temperature	from -40 °C to +80 °C	from - 20 °C to + 65 °C
♦ Ambient temperature	from -40 °C to +60 °C	from - 20 °C to + 60 °C
♦ Weight	1,4 kg	2,0 kg

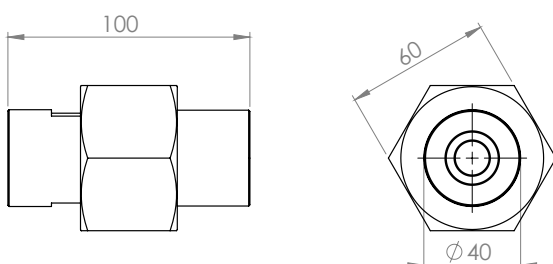
Version May 2016

Version

- ♦ For oxygen service (m-tech standard) assembled free of oil and grease

Dimensions

♦ MPG Series



♦ HPG Series

